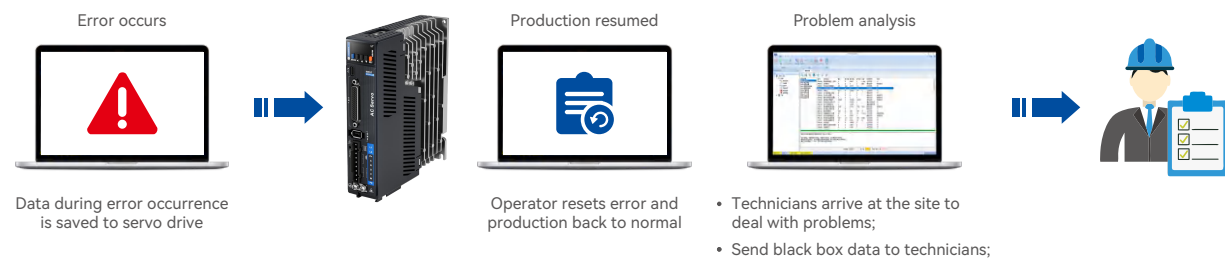
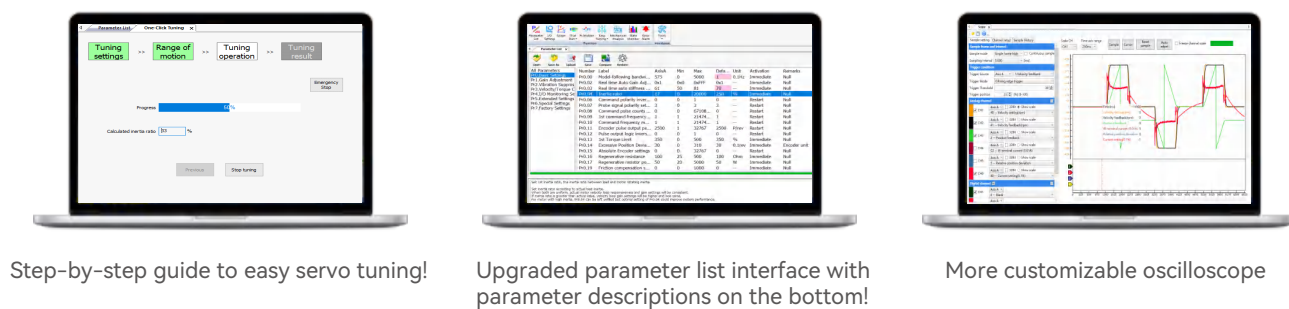


Servo drive features

	EL7-D***Z	EL7-RS***Z	EL7-RS***P
Black Box	No	No	Yes To record data for problem analysis
Warning (Ar-A01-A0E)	No	No	Yes Protective function set in but motor won't stop moving. Please refer to user manual for details.



	EL7-D***Z	EL7-RS***Z	EL7-RS***P
Motion Studio		Motion Studio Ver. 1.4.9	Motion Studio Ver 2.2.4: <ul style="list-style-type: none"> • Whole new user interface - more customizable to users' operating habits; • Whole new oscilloscope with more practical configurations and functions; • Parameters descriptions and setting guidance provided; • Step-by-step procedure for most functions / settings;



Stock Code: 002979



Headquarters
Leadshine Technology Co., Ltd.

④ www.leadshine.com
 ☎ +86 755 26411692 ☎ +86 755 26402718
 ✉ sales@leadshine.com (Sales)
 tech@leadshine.com (Technical Support)
 ① 15-20/F, Block B, Nanshan I Valley, No.3157, Shahe West Road,
 Nanshan District, Shenzhen, Guangdong, China

North America Office
Leadshine America, Inc.

④ www.leadshineusa.com
 ☎ 1-949-608-7270 ☎ 1-949-638-7298
 ✉ sales@leadshineusa.com (Sales)
 support@leadshineusa.com (Technical Support)
 ① 26050 Towne Centre Dr.Foothill Ranch, CA 92610 USA

D230324



EL7-RS Series

General Purpose AC Servo System

Product Introduction

EL7 – RS Series

EL7-RS series AC Servo Drive is equipped with easy servo tuning (One-click Tuning/ Single Parameter Tuning), Zero Tracking Control (ZTC), vibration suppression and many more. This AC servo drive series also comes with new AC servo motors with 23-bit optical/magnetic encoder which offers better accuracy and stability.

	EL7-D***Z	EL7-RS***Z	EL7-RS***P
Outer Appearance			 Upgraded to a more modern look. In consistence with new EL7-EC***F series servo drives.
RS485 communication: CN4/CN5 communication port	No	Yes	Yes

Servo drive features

	EL7-D***Z	EL7-RS***Z	EL7-RS***P
Control mode	Pulse+Direction/Analogue	Pulse+Direction/ Modbus RTU/Analogue	Pulse+Direction/ Modbus RTU/Analogue
Pulse input frequency	Low speed: Differential 0~500kHz (5V), Single-ended 0~200kHz (24V)		Low speed: Differential 0~500kHz (5V) Single-ended 0~200kHz (24V) High speed: Differential 0~4MHz (5V)
Tuning port	USB mini		USB Type-C - more stable, smartphone data cables can be used
I/Os	9DI \ 6DO \ 2AI		8DI \ 5DO \ 2AI \ 1AO
Analog output	No	No	Yes. Used for torque/servo drive status monitoring
Parameter Pr2.5x Overshoot and feedforward compensation parameters	No	No	Yes. To better set up feedforward gain, friction compensation and compensate for axis motor overshoot.

Ports & Connectors



Part Numbers

EL7 - RS 400 P - □

Series Num	
EL7	EL7 AC Servo Drive Series

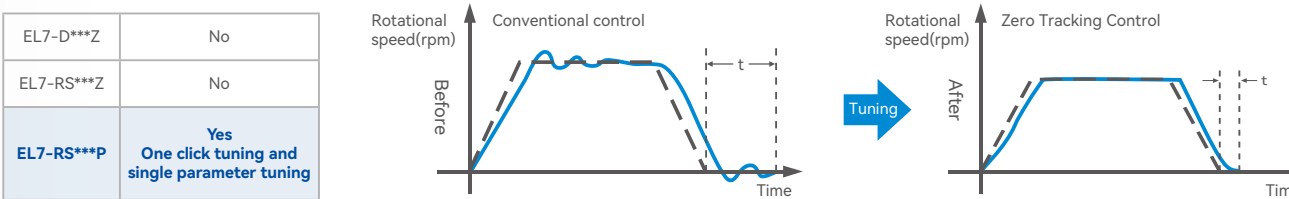
Extra(customized)	
Blank	Standard

Type	
p	Full functions without STO

Command Source	
EC	EtherCAT
RS	Pulse+train + Modbus RTU + Analogue

Rated Power	
400	400W
750	750W
1000	1000W
1500	1500W
2000	2000W

Easy Servo Tuning



Zero Tracking Control (ZTC)

